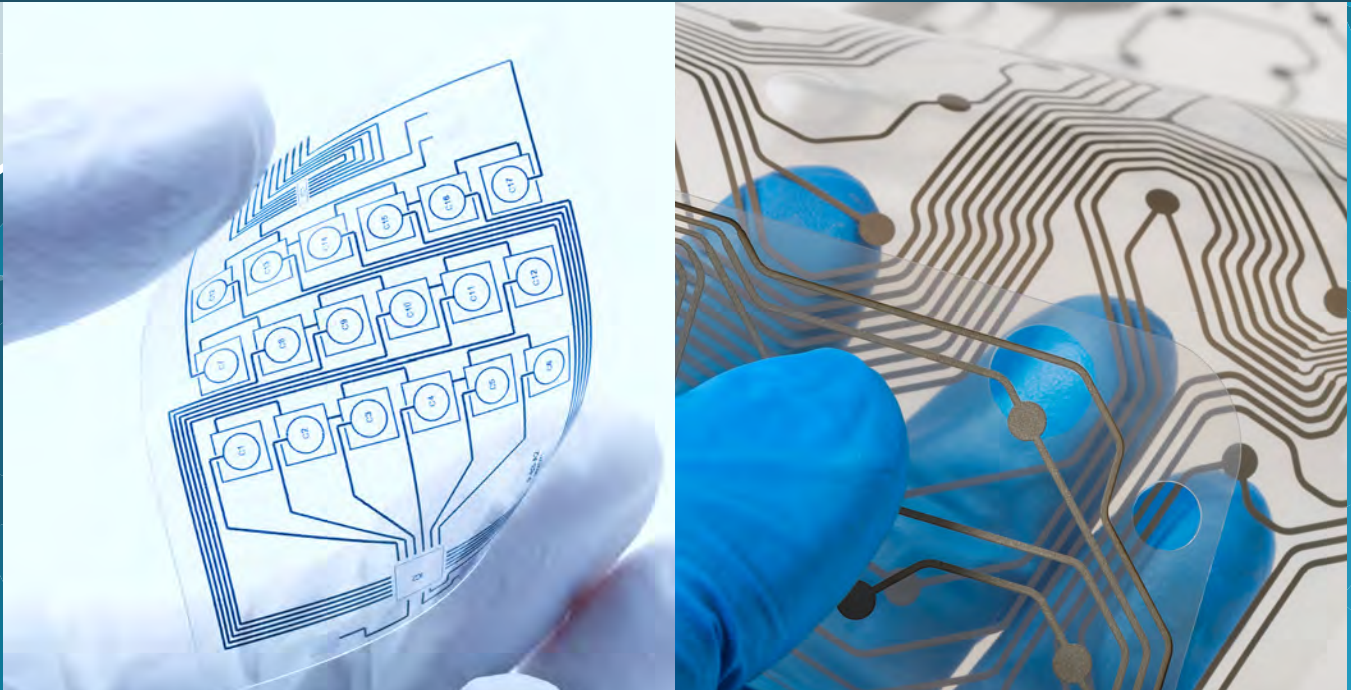




SOLUTIONS THAT STICK™

Pressure Sensitive Adhesive Tapes

Mactac manufactures pressure sensitive adhesive tapes designed for sensitive bonding and assembly applications. Our adhesive systems are designed to be compatible with most conductive inks and will not corrode or create interference in delicate circuitry.



Flexible Printed Circuit & Membrane Switches

• Bonding Layers • Attachment Tapes • Dielectric Tapes • Encapsulation Tapes



Flexible Printed Circuit & Membrane Switches

- Bonding Layers • Attachment Tapes
- Dielectric Tapes • Encapsulation Tapes

Double Coated	Construction							Master Roll		Weight / MSI	Stock/MTO	Comments	
	Part Number	Carrier	Adhesive	Coat Weight Mils		Caliper Mils	Liner	End Use	Width				Length
				Liner	Unwind	Carrier & Adhesive		Release					
IB2122-290	1.0 mil PET	MP481	1.5	1.5	4.0	90#/90#	Medium	54"	750'	.28	S		
IB2322-290	3.0 mil PET	MP481	1.5	1.5	6.0	90#/90#	Medium	54"	1500'	.28	M	Roll or Sheet 10-15 Day Lead Time	
IB2522-290	5.0 mil PET	MP481	1.5	1.5	8.0	90#/90#	Medium	54"	1500'	.32	M	Roll or Sheet 10-15 Day Lead Time	

Construction										Master Roll		Weight / MSI	Stock/MTO
Part Number	Carrier	Adhesive	Coat Weight Mils		Caliper Mils	Liner	End Use	Minimum Breakdown Voltage (kVAC)	Width	Length			
			Liner	Unwind	Carrier & Adhesive		Release						
Cleantape Double-Coated Tapes													
CB4161-72	.5 mil PET	LV860	1.8	1.8	4.1	72# PCK	Medium	3.5	54"	750'	.36	S	
CB4180-72	.5 mil PET	LV820	1.2	1.2	2.9	72# PCK	Medium	2.5	54"	750'	0.33	S	
CB4180-80	.5 mil PET	LV820	1.2	1.2	2.9	80# NT PCK	Medium		54"	750'	0.33	M	
CB4181-72	.5 mil PET	LV820	1.8	1.8	4.1	72# PCK	Medium	3.25	54"	750'	0.38	S	
CB4182-72	.5 mil PET	LV820	2.4	2.4	5.3	72# PCK	Medium	3.5	54"	750'	0.46	S	
CB4182-80						80# NT PCK							

Construction							Master Roll		Weight / MSI	Stock/MTO
Part Number	Carrier	Adhesive	Coat Weight Mils	Caliper Mils	Liner	End Use	Width	Length		
				Liner & Adh		Release				
Cleantape Single Liner Transfer Adhesives										
CF4082-72	NA	LV820	2.0	7.8	72# PCK	Medium	54"	540'	0.32	S
CF4082-80	NA	LV820	2.0	8.1	80# NT PCK	Medium	54"	540'	0.33	M
CF4083-72	NA	LV820	3.0	8.8	72# PCK	Medium	54"	540'	0.33	S
CF4083-80	NA	LV820	3.0	9.1	80# NT PCK	Medium	60"	540'	0.35	S
CF4084-72	NA	LV820	4.0	9.8	72# PCK	Medium	54"	540'	0.35	S
CF4084-80	NA	LV820	4.0	10.1	80# NT PCK	Medium	60"	540'	0.39	S
CF4092-72	NA	LV840	2.0	7.8	72# PCK	Medium	60"	540'	0.32	S
CF4094-72	NA	LV840	4.0	9.8	72# PCK	Medium	60"	540'	0.35	S

Visit www.mactac.com/medical for more information.

